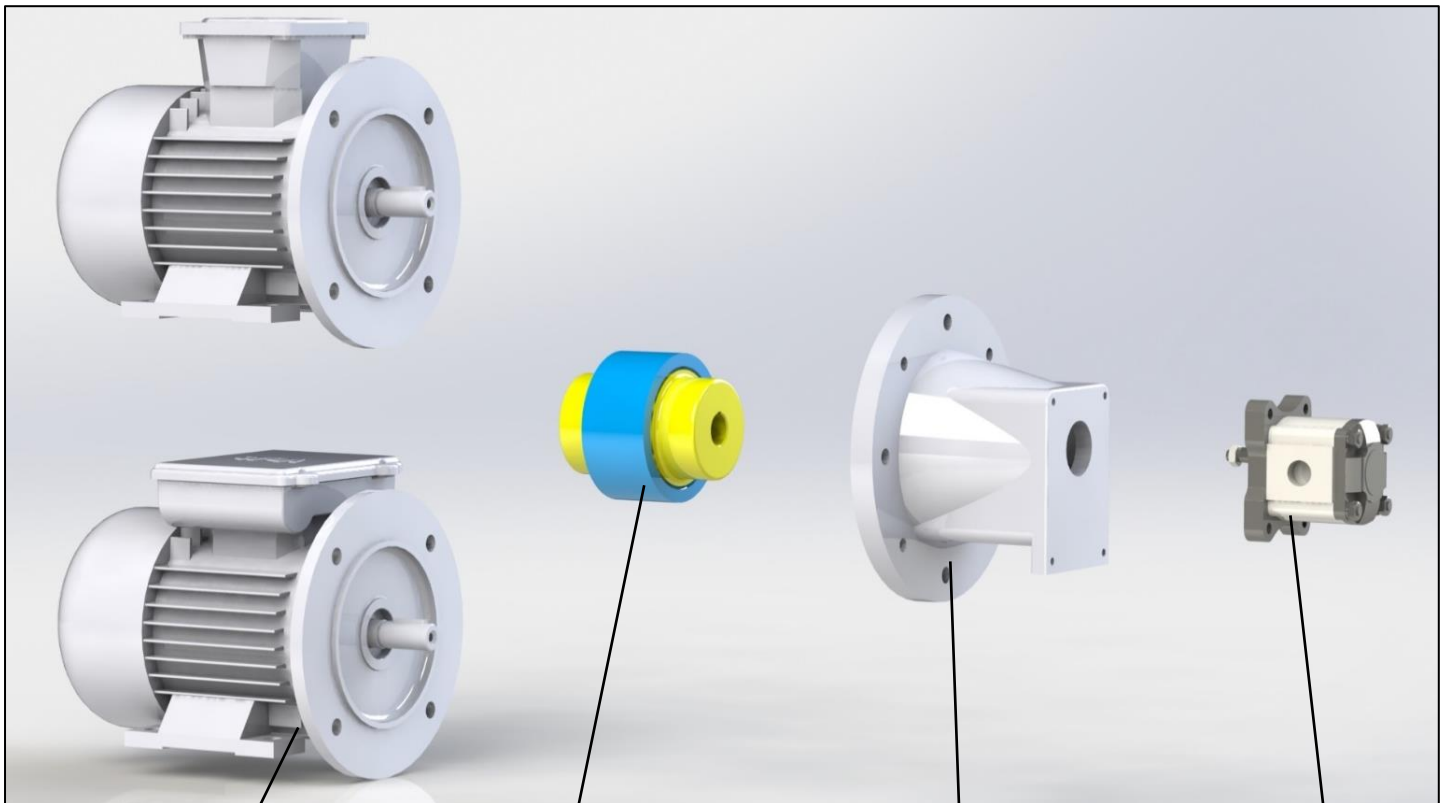


INDUSTRIAL POWER UNIT SELECTION WITH GROUP 10 PUMPS

- In this supporting document, selection guide for standard power pack is specified.



Electric motor

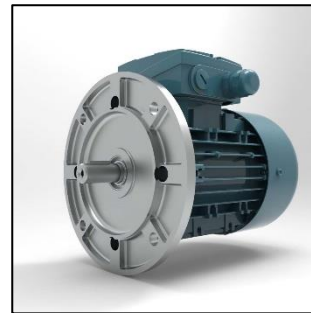
Elastic coupling

Bellhousing

Hydraulic pump

1. ELECTRIC MOTOR (STEP 1)

- Electric motors are 4 poles and have B35 configuration (with feet) as standard. Please contact us for other options.


B35 type

B5 type

Code	Power	Voltage	Flange diameter	Shaft diameter	Frame size	Assembly
AC3V-0.75-1500-B35	0.75 kW	380 V, three phase, 50 Hz, 4 poles	200 mm	19 mm	80	B35
AC3V-1.1-1500-B35	1.1 kW		200 mm	24 mm	90S	
AC3V-1.5-1500-B35	1.5 kW		200 mm	24 mm	90L	
AC3V-2.2-1500-B35	2.2 kW		250 mm	28 mm	100	
AC3V-3-1500-B35	3 kW		250 mm	28 mm	100	
AC3V-4-1500-B35	4 kW		250 mm	28 mm	112	
AC1V-0.37-1500-B35	0.37 kW	220 V, mono phase, 50 Hz, 4 poles	200 mm	19 mm	80	
AC1V-0.55-1500-B35	0.55 kW		200 mm	19 mm	80	
AC1V-0.75-1500-B35	0.75 kW		200 mm	19 mm	80	
AC1V-1.1-1500-B35	1.1 kW		200 mm	24 mm	90Sa	
AC1V-1.5-1500-B35	1.5 kW		200 mm	24 mm	90L	
AC1V-2.2-1500-B35	2.2 kW		250 mm	28 mm	100	
AC1V-3-1500-B35	3 kW		250 mm	28 mm	100	

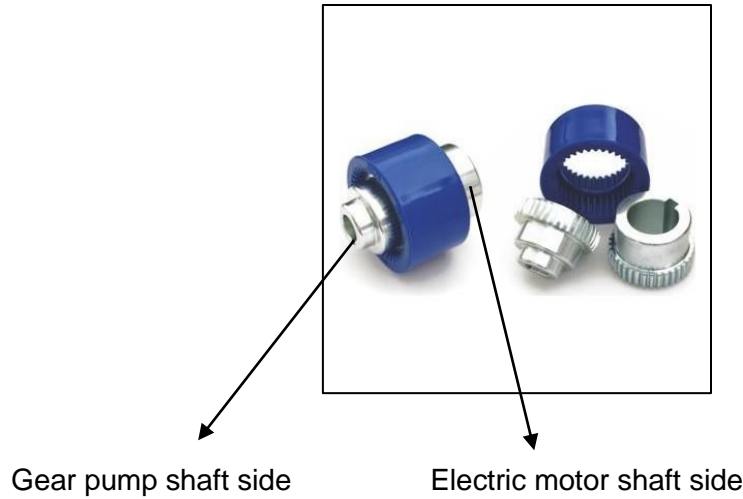
2. BELLHOUSING (STEP 2)

- Bellhousings are selected according to electric motor frame and hydraulic pump. Group 10 pumps have 4 bolt rectangular flange as standard.

Code	Flange diameter	Pump group
0K-140	140 mm	Group 10 pumps
0K-160	160 mm	
0K-200	200 mm	
0K-250	250 mm	

3. ELASTIC COUPLING (STEP 3)

- Processed elastic couplings are selected according to electric motor shaft and pump group. Both sides of the coupling are machined.



Ordering example: 24DÇ-0P-19

24DÇ: Model

0P: Group 10 pump

19: Electric motor shaft diameter

Code	Pump group	Available motor shaft diameter
14DÇ	Group 10	14 mm
24DÇ		14, 19, 24 mm
28DÇ		14, 19, 24, 28 mm

4. HYDRAULIC PUMP (STEP 4)

Code	Displacement [cc/rev]	Port configuration
A/C027X	1.2	Flanged ports
A/C036X	1.63	
A/C048X	2.18	
A/C060X	2.72	
A/C072X	3.27	
A/C084X	3.81	
A/C096X	4.36	
A/C102X	4.91	
A/C12X	5.7	



- **Rotation from shaft view:** A: Anti-clockwise, C: Clockwise

Code	Displacement [cc/rev]	Port configuration
H10A/C1X026	1	Flanged ports
H10A/C1.25X026	1.25	
H10A/C1.6X026	1.6	
H10A/C2X026	2	
H10A/C2.5X026	2.5	
H10A/C2.65X026	2.65	
H10A/C3.15X026	3.15	
H10A/C3.65X026	3.65	
H10A/C4.2X026	4.2	
H10A/C4.7X026	4.7	
H10A/C5X026	5	
H10A/C5.7X026	5.7	
H10A/C6.1X026	6.1	
H10A/C7.4X026	7.4	
H10A/C8X026	8	
H10A/C8.5X026	8.5	
H10A/C9.8X026	9.8	



- **Rotation from shaft view:** A: Anti-clockwise, C: Clockwise

Code	Displacement [cc/rev]	Port configuration
H10A/C1X053G	1	BSP threaded ports
H10A/C1.25X053G	1.25	
H10A/C1.6X053G	1.6	
H10A/C2X053G	2	
H10A/C2.5X053G	2.5	
H10A/C2.65X053G	2.65	
H10A/C3.15X053G	3.15	
H10A/C3.65X053G	3.65	
H10A/C4.2X053G	4.2	
H10A/C4.7X053G	4.7	
H10A/C5X053G	5	
H10A/C5.7X053G	5.7	
H10A/C6.1X053G	6.1	
H10A/C7.4X053G	7.4	
H10A/C8X053G	8	
H10A/C8.5X053G	8.5	
H10A/C9.8X053G	9.8	



- **Rotation from shaft view:** A: Anti-clockwise, C: Clockwise
- For Metric and UNF port threads, please contact us.

5. PUMP FLANGES (STEP 5) – OPTIONAL

Code	Center diameter	Type	Thread
Q 30/30	30 mm	Straight	G 1/2"



Code	Center diameter	Type	Thread
Q30 90-1/2	30 mm	Elbow	G 1/2"
Q30 90-3/8	30 mm	Elbow	G 3/8"

