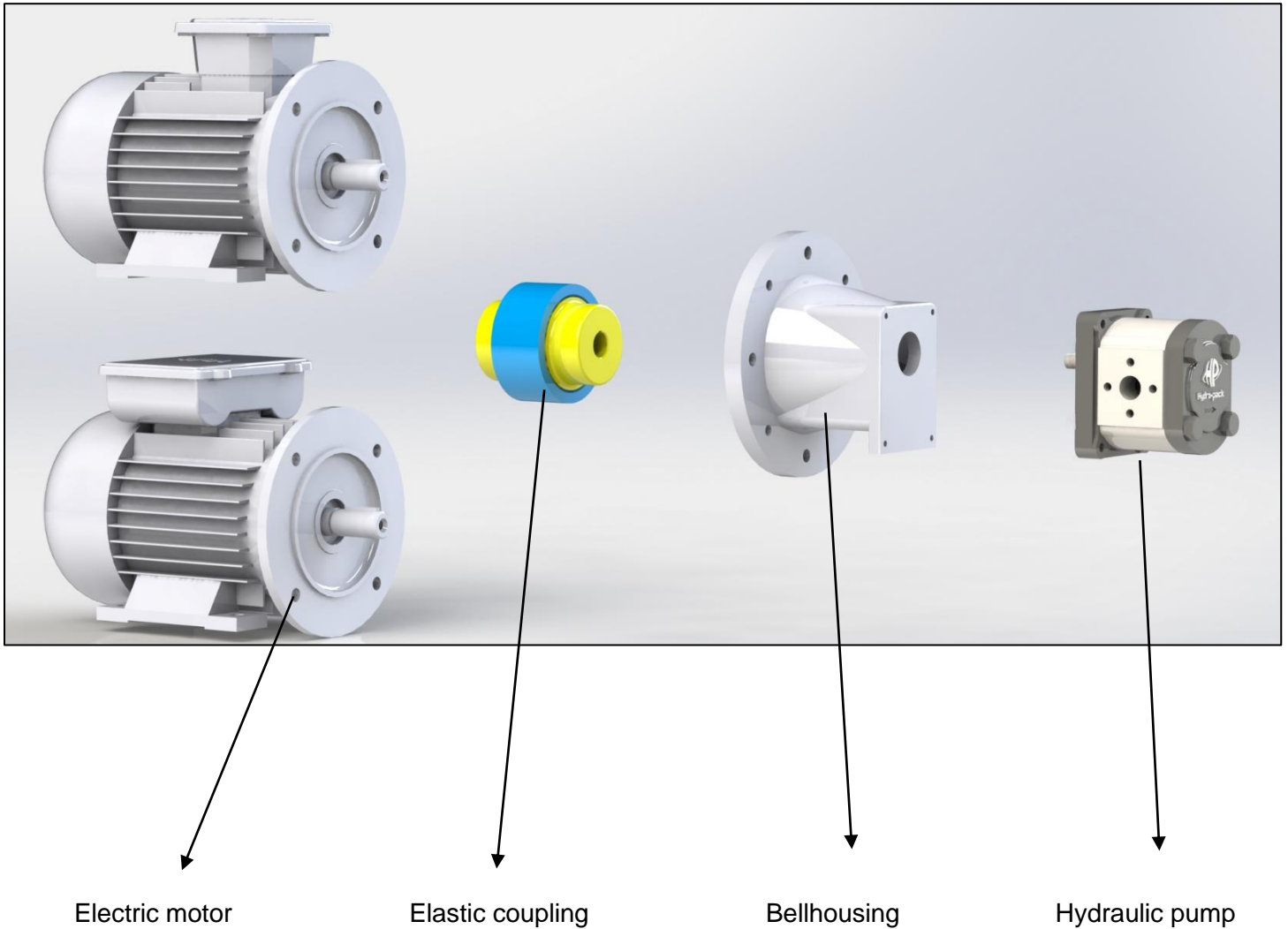


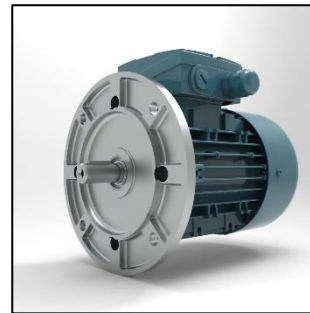
INDUSTRIAL POWER UNIT SELECTION WITH GROUP 20 PUMPS

- In this supporting document, selection guide for standard power pack is specified.



1. ELECTRIC MOTOR (STEP 1)

- Electric motors are 4 poles and have B35 configuration (with feet) as standard. Please contact us for other options.


B35 type

B5 type

Code	Power	Voltage	Flange diameter	Shaft diameter	Frame size	Assembly
AC3V-0.75-1500-B35	0.75 kW	380 V, three phase, 50 Hz, 4 poles	200 mm	19 mm	80	B35
AC3V-1.1-1500-B35	1.1 kW		200 mm	24 mm	90S	
AC3V-1.5-1500-B35	1.5 kW		200 mm	24 mm	90L	
AC3V-2.2-1500-B35	2.2 kW		250 mm	28 mm	100	
AC3V-3-1500-B35	3 kW		250 mm	28 mm	100	
AC3V-4-1500-B35	4 kW		250 mm	28 mm	112	
AC3V-5.5-1500-B35	5.5 kW		300 mm	38 mm	132S	
AC3V-7.5-1500-B35	7.5 kW		300 mm	38 mm	132M	
AC3V-11-1500-B35	11 kW		350 mm	42 mm	160M	
AC3V-15-1500-B35	15 kW		350 mm	42 mm	160L	
AC3V-18.5-1500-B35	18.5 kW		350 mm	48 mm	180M	
AC3V-22-1500-B35	22 kW		350 mm	48 mm	180L	
AC1V-0.25-1500-B35	0.25 kW	220 V, mono phase, 50 Hz, 4 poles	160 mm	14 mm	71	
AC1V-0.37-1500-B35	0.37 kW		200 mm	19 mm	80	
AC1V-0.55-1500-B35	0.55 kW		200 mm	19 mm	80	

AC1V-0.75-1500-B35	0.75 kW		200 mm	19 mm	80	
AC1V-1.1-1500-B35	1.1 kW		200 mm	24 mm	90Sa	
AC1V-1.5-1500-B35	1.5 kW		200 mm	24 mm	90L	
AC1V-2.2-1500-B35	2.2 kW		250 mm	28 mm	100	
AC1V-3-1500-B35	3 kW		250 mm	28 mm	100	

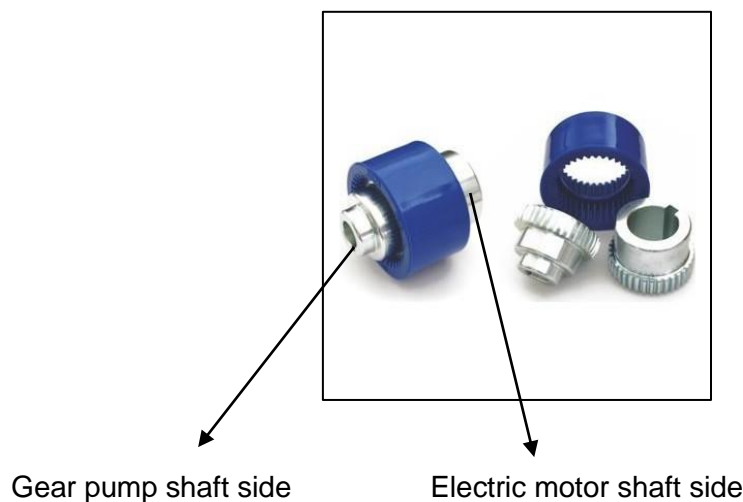
2. BELLHOUSING (STEP 2)

- Bellhousings are selected according to electric motor frame and hydraulic pump. Group 20 pumps have 4 bolt rectangular flange as standard.

Code	Flange diameter	Pump group
1K-160	160 mm	Group 20 pumps
1K-200	200 mm	
1K-250	250 mm	
1K-300	300 mm	
1K-350	350 mm	

3. ELASTIC COUPLING (STEP 3)

- Processed elastic couplings are selected according to electric motor shaft and pump group. Both sides of the coupling are machined.



Ordering example: 28DÇ-1P-24

28DÇ: Model

1P: Group 20 pump

24: Electric motor shaft diameter

Code	Pump group	Available motor shaft diameter
14DÇ	Group 20	14 mm
24DÇ		14, 19, 24 mm
28DÇ		14, 19, 24, 28 mm
32DÇ		19, 24, 28 mm
38DÇ		24, 28, 38 mm
42DÇ		24, 28, 38, 42 mm
48DÇ		28, 38, 42, 48 mm
55DÇ		38, 42, 48, 55 mm
60DÇ		42, 48, 55, 60 mm

4. HYDRAULIC PUMP (STEP 4)

Code	Displacement [cc/rev]	Port configuration
A/C10XH	4.5	Flanged ports
A/C14XH	6.3	
A/C18XH	8.2	
A/C25XH	11.3	
A/C33XH	15	
A/C42XH	19	



- **Rotation from shaft view:** A: Anti-clockwise, C: Clockwise

Code	Displacement [cc/rev]	Port configuration
H20A/C4.5X006	4.5	Flanged ports
H20A/C6.3X006	6.3	
H20A/C8.2X006	8.2	
H20A/C10X006	10	
H20A/C11X006	11	
H20A/C12X006	12	
H20A/C14X006	14	
H20A/C15X006	15	
H20A/C16X006	16	
H20A/C19X006	19	
H20A/C22X006	22	
H20A/C25X006	25	
H20A/C28X006	28	



- **Rotation from shaft view:** A: Anti-clockwise, C: Clockwise

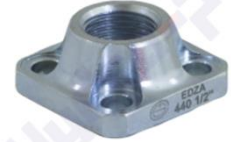
Code	Displacement [cc/rev]	Port configuration
H20A/C4.5X016G	4.5	BSP threaded ports
H20A/C6.3X016G	6.3	
H20A/C8.2X016G	8.2	
H20A/C10X016G	10	
H20A/C11X016G	11	
H20A/C12X016G	12	
H20A/C14X016G	14	
H20A/C15X016G	15	
H20A/C16X016G	16	
H20A/C19X016G	19	
H20A/C22X016G	22	
H20A/C25X016G	25	



- **Rotation from shaft view:** A: Anti-clockwise, C: Clockwise
- For Metric and UNF port threads, please contact us.

5. PUMP FLANGES (STEP 5) – OPTIONAL

Code	Center diameter	Type	Thread
Q 30/30	30 mm	Straight	G 3/8"
Q 30/40	30 / 40 mm	Straight	G 3/8"
Q 30/40-1/2	30 / 40 mm	Straight	G 1/2"
Q 40/40	40 / 40 mm	Straight	G 1/2"



Code	Center diameter	Type	Thread
Q 30/30 90	30 mm	Elbow	G 3/8"
Q 30/40 90	30 / 40 mm	Elbow	G 3/8"
Q 30/40 90-1/2	30 / 40 mm	Elbow	G 1/2"
Q 40/40 90	40 / 40 mm	Elbow	G 1/2"

